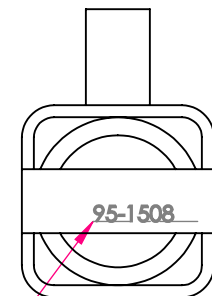
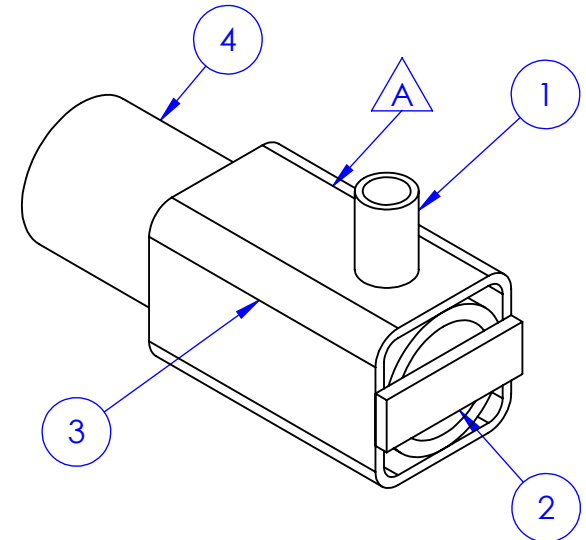
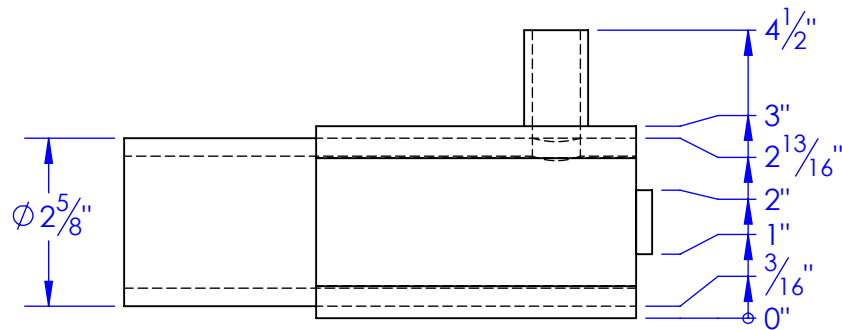
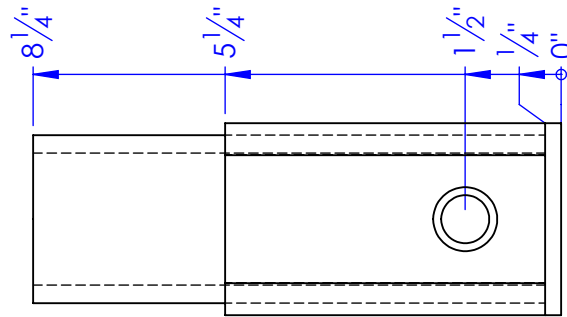
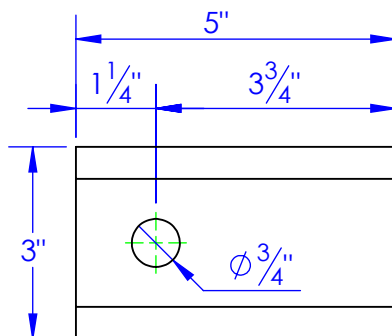
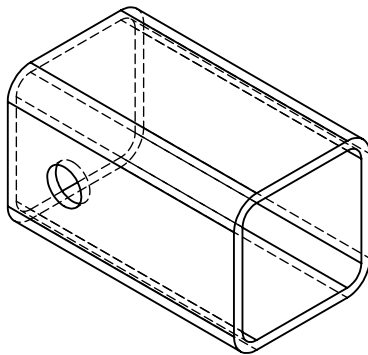


| ITEM NO. | PART NUMBER                 | DESCRIPTION           | DRAWING # | QTY. |
|----------|-----------------------------|-----------------------|-----------|------|
| 1        | DRILL GUIDE .75 I.D. 1 O.D. | DRILL GUIDE 3/4" I.D. | PURCHASED | 1    |
| 2        | FL .25 X 1 L 3              | LENGTH: 3"            | STOCK     | 1    |
| 3        | ST 3 x .1875 L 5            | LENGTH: 5"            | 95-1508   | 1    |
| 4        | ST-MT 2.625 x 2.0625 L 8    | LENGTH: 8"            | STOCK     | 1    |

| REV. | DESCRIPTION     | DATE     | APPROVED |
|------|-----------------|----------|----------|
| A    | INITIAL RELEASE | 6/4/2012 |          |

3  
ST 3 x .1875 L 5  
LENGTH: 5"



STAMP IN DRAWING #

**PROPRIETARY AND CONFIDENTIAL**  
THE INFORMATION CONTAINED IN THIS  
DRAWING IS THE SOLE PROPERTY OF TRIPLE  
C INC. ANY REPRODUCTION IN PART OR  
AS A WHOLE WITHOUT THE WRITTEN  
PERMISSION OF TRIPLE C INC. IS PROHIBITED.

|  |  |   |          |
|--|--|---|----------|
| DIMENSIONS ARE IN INCHES<br>TOLERANCES:<br>FRACTIONAL $\pm 1/16$<br>ANGULAR: MACH $\pm 1$ BEND $\pm$<br>TWO PLACE DECIMAL $\pm 010$<br>THREE PLACE DECIMAL $\pm 005$ |  | NAME  | DATE     |
| DRAWN  |  | HEATH   | 6/4/2012 |
| PART #   |  | JIG ST-MT 2.625                                 |          |
| ASM #  |  |   |          |
| COMMENTS:  |  | ST-MT 2-5/8"<br>O..D DRILL JIG,<br>PS REAR ASM. |          |
| MATERIAL   |  | ---   |          |
| DO NOT SCALE DRAWING   |  |   |          |

P.O. BOX 248,  
SABETHA, KS 66534

**TRIPLE C**  
INC.

|                  |                            |                  |
|------------------|----------------------------|------------------|
| SIZE<br><b>A</b> | DWG. NO.<br><b>95-1508</b> | REV.<br><b>A</b> |
| SCALE: 1:3       | WEIGHT: 7.68               | SHEET 1 OF 1     |